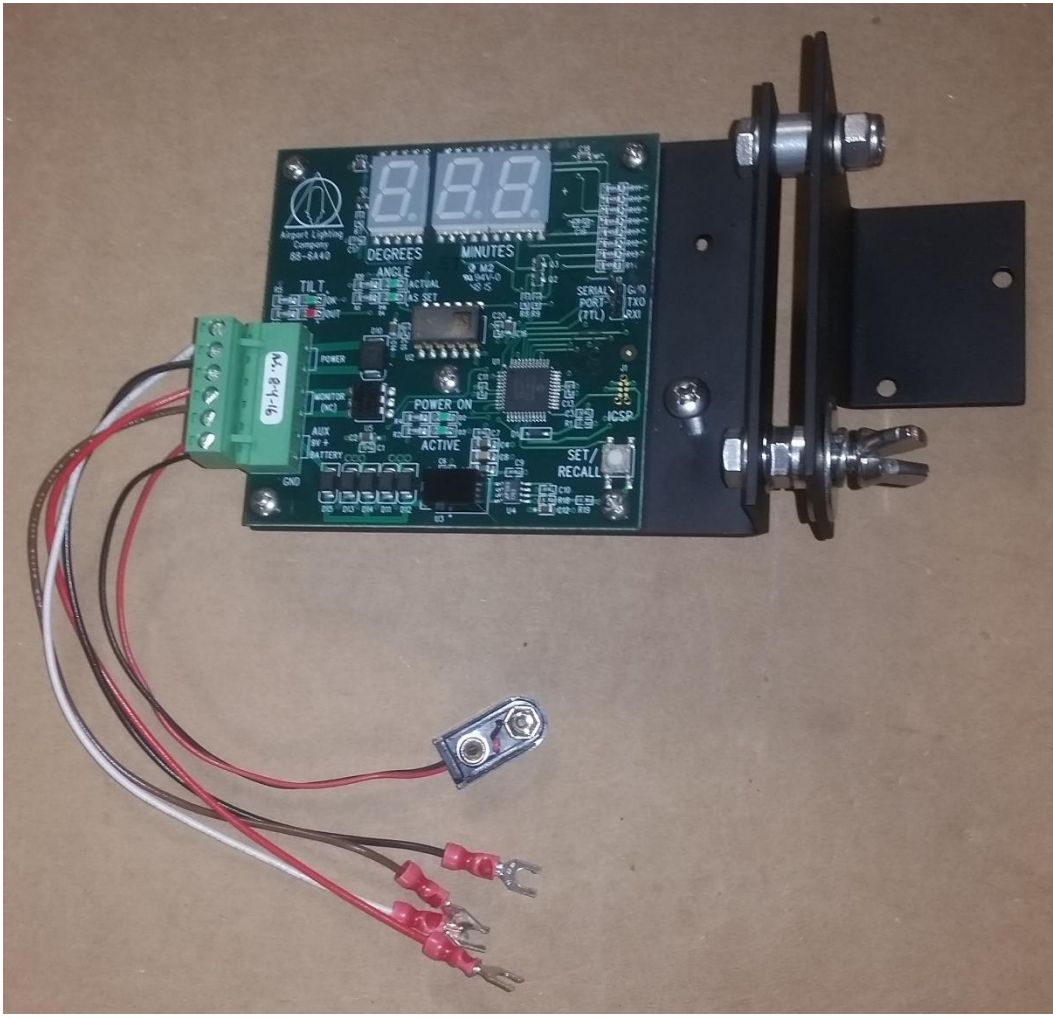


VPAPI D.A.T.S. RETROFIT KIT INSTALLATION INSTRUCTIONS

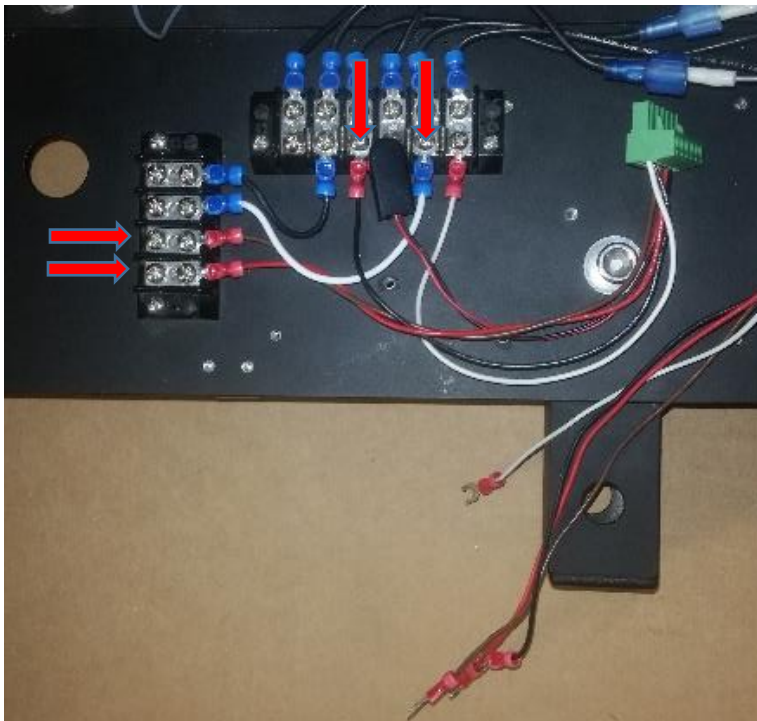
P/N: 88-6A50-V



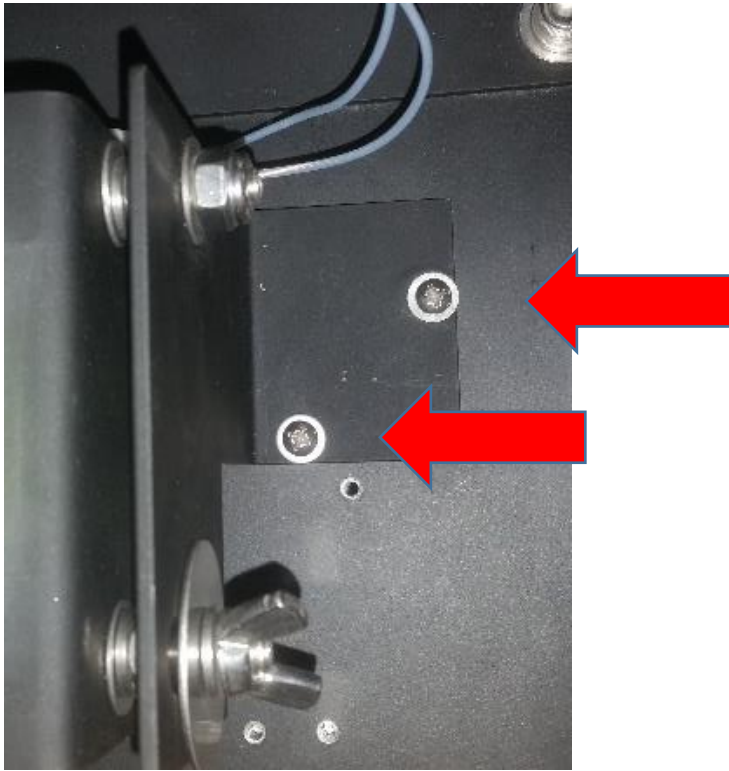
- 1) Turn power off to the Light Unit.
- 2) Remove the harness from circuit board.



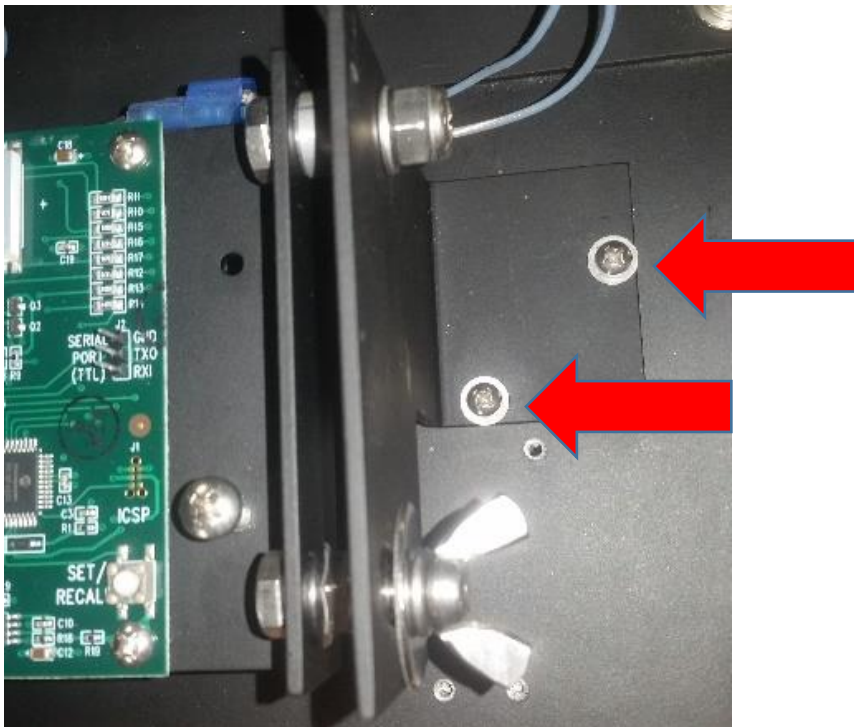
- 3) At the (2) terminal blocks, one-by-one remove each wire that leads to old tilt switch and replace with same color wire from new harness.



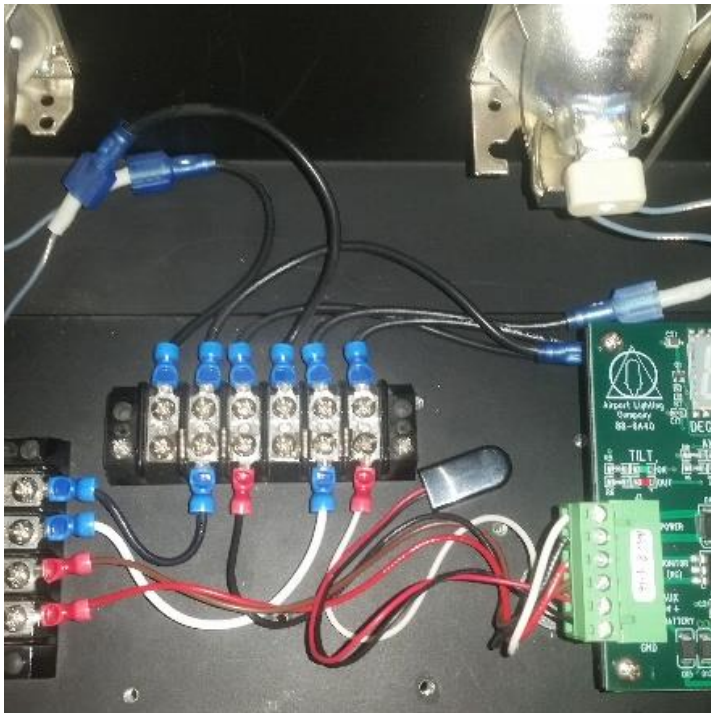
4) Remove (2) screws, washers and lock washers that mount the old Tilt Switch to the Light Unit baseplate.



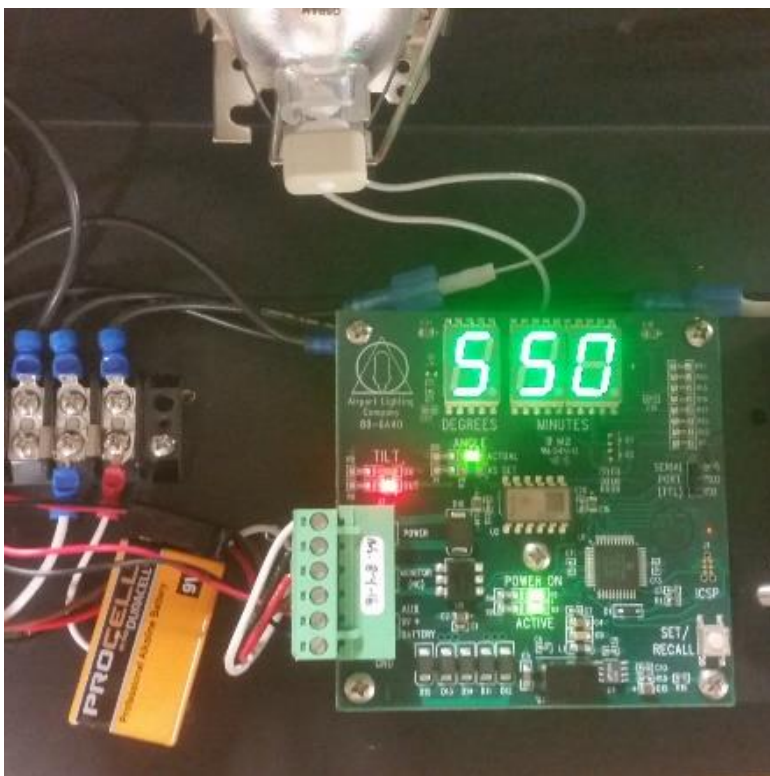
5) Use the same hardware and same mounting holes to install the Retrofit Kit.



6) Plug the harness back into the circuit board. Loosen the wingnut on the right side of the Retrofit Kit until the bracket swivels freely.



7) Plug a 9V battery into the adapter on the harness. The board will power on.



7) Begin rotating the angle adjustment screw to bring the sensor as close to a level position "0 00" as possible. (+/- 0.05 is acceptable).



8) Use the screwdriver to maintain slight downward pressure on the angle adjusting screw and gently snug the wingnut to set the bracket firmly in place.

9) Remove the 9V battery from the adapter.

10) Turn power back on to the Light Unit to confirm calibration.