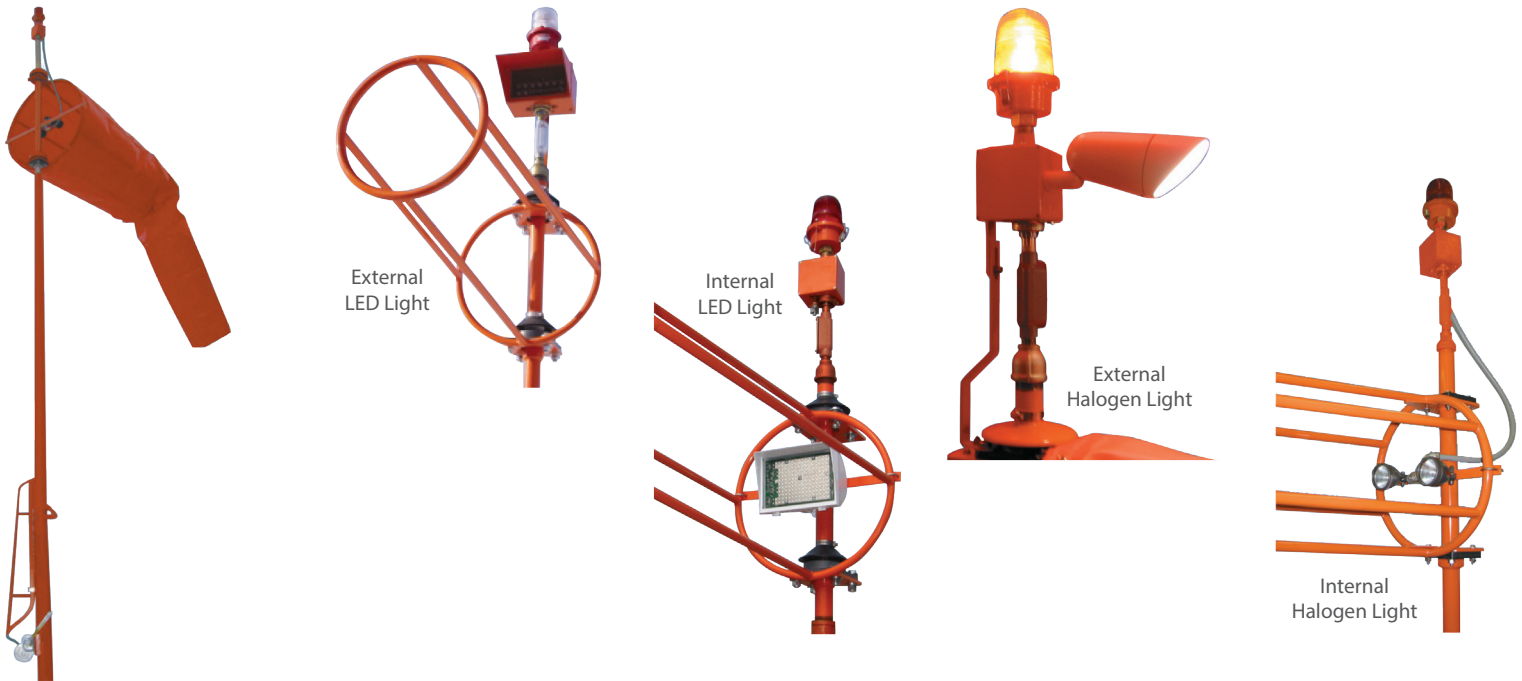


# L-807 Wind Cone



## Compliances

Certified to FAA: L-807 AC 150/5345-27 (Current Edition) ETL Certified and ICAO Annex 14, Vol. 1, para. 5.1.1 (Size 2 only)



## Application

This Hali-Brite primary wind cone provides visual indication of wind direction and velocity at a location on an airfield. FAA Size 2 wind cones are used at the central location on the airfield. FAA Size 1 wind cones are used on smaller airfields and heliports.

## Key Features

- Available externally lighted, internally lighted, or unlighted
- LED or halogen lamps
- All LED models feature:
  - 50,000 to 100,000 hour lamp life, virtually maintenance free
  - Multiple lamp circuits, for improved reliability
  - 80-90% less power consumption than halogen lamps
  - A long-life LED obstruction light
- Integral power-adaptor on externally-lighted, series-circuit LED models
- An incandescent L-810 obstruction light is included on halogen lighted models
- Size 1 (18" x 8' long) or Size 2 (36" x 12' long) wind socks
- The pole is center-hinged, with 4" diameter steel on the bottom, and 3" diameter steel on the top
- A center-mounted braked winch allows 1-person maintenance
- The four anchor bolts are a one-piece welded assembly, ready to drop in the ground
- The aluminum basket is welded, one piece, with pre-installed bearings
- Raincaps protect the bearings from weather
- The nylon sock is treated for rot, mildew and water repellency
- Powder coat painted international orange



# Specifications

## Selection Chart

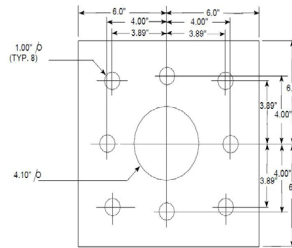
Catalog Number	See Notes	FAA Size	FAA Style	Power Source	Lamp Type	Fixture Watts	Fixture VA	Weight (lbs)	Replacement Lamp
L-807-S1-UN-NON-ON-N		1	II Unlighted	None	None	0	0	187	None
L-807-S1-EX-120-ON-5		1	I-A External	108-132 VAC	LED	14	15	198	9200-0032
L-807-S1-EX-230-ON-5	2	1	I-A External	207-253 VAC	LED	14	15	198	9200-0044
L-807-S1-EX-66A-ON-5	4,5	1	I-A External	2.8-6.6 AMP	LED	26	28	197	9200-0034
L-807-S1-IN-120-ON-5		1	I-B Internal	108-132 VAC	LED	19	32	200	9200-0038
L-807-S1-IN-120-ON-N	2	1	I-B Internal	108-132 VAC	Halogen	316	316	198	9400-0100Regent
L-807-S1-EX-12-ON-5		1	I-A External	11.5-13 VDC	LED	6	6	197	9200-0033
L-807-S1-IN-12-ON-5	2	1	I-B Internal	11.5-13 VDC	LED	6	6	197	9200-0041
L-807-S1-IN-66A-ON-5	4,5	1	I-B Internal	2.8-6.6 AMP	LED	37	41	198	9200-0039
L-807-S2-UN-NON-ON-N		2	II Unlighted	None	None	0	0	199	None
L-807-S2-IN-120-ON-5		2	I-B Internal	108-132 VAC	LED	32	60	212	9200-0040
L-807-S2-EX-120-ON-5		2	I-A External	108-132 VAC	LED	21	22	210	9200-0035
L-807-S2-EX-230-ON-5	2	2	I-A External	207-253 VAC	LED	21	22	210	9200-0043
L-807-S2-EX-66A-ON-5	4,5	2	I-A External	2.8-6.6 AMP	LED	26	28	209	9200-0037
L-807-S2-IN-120-ON-N		2	I-B Internal	108-132 VAC	Halogen	516	516	210	3400-0100Regent
L-807-S2-EX-12-ON-5		2	I-A External	11.5-13 VDC	LED	10	10	210	9200-0036
L-807-S2-IN-12-ON-5	2	2	I-B Internal	11.5-13 VDC	LED	10	10	210	9200-0042
L-807-S2-IN-66A-ON-5	3,5	2	I-B Internal	2.8-6.6 AMP	LED	57	53	210	9200-0031
L-807-S2-EX-12-ON-5		2	I-A External	11.5-13 VDC	LED	10	10	210	9200-0036
L-807-S2-IN-12-ON-5	2	2	I-B Internal	11.5-13 VDC	LED	10	10	210	9200-0042

Notes:

1. Power consumption specifications include the L-810 obstruction light
2. This FAA Style can not be ETL certified
3. Requires 200 watt L-830 transformer, sold separately
4. Requires 100 watt L-830 transformer, sold separately
5. L-830 VA not included, is 16 VA for all models

## Spare Components

Part Number	Description
7400-0000-1	Size 1 Windsock, 18" x 8', orange
7400-0002	Size 2 Windsock, 36" x 12', orange



Base Layout

NOTE:  
Only 4 Anchor Bolts Required

