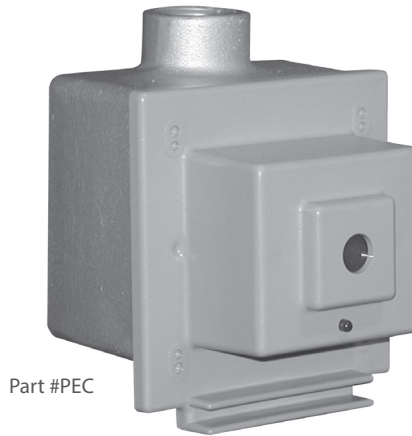


# Photo Electric Control (PEC)



Part #PEC

## Application

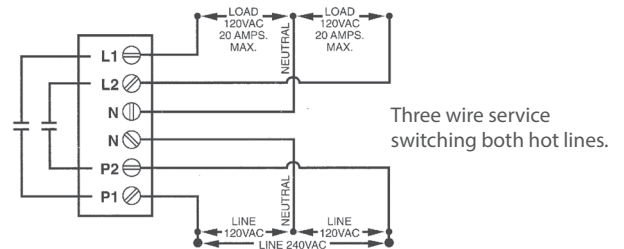
Automatic dusk to dawn operation of tower and obstruction lighting circuit

## Key Features

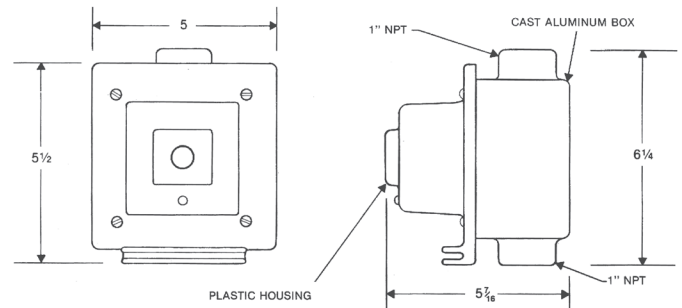
- Meets FAA/FCC requirements
- Two 30 ampere load contacts
- Direct replacement of older and newer types
- Stable electronic circuitry
- No chatter due to built-in time delay
- Molded plastic control housing with gasket
- Cast aluminum junction box with one inch hubs, top and bottom
- LED power indication
- Surge protected

## Specifications

Type	Light actuated electronic circuitry with high current electromechanical output contacts
Indication	LED power indicator
Operating Voltage	120 VAC $\pm$ 20% 50/60 Hz
Output Rating:	Two SPST N.O. 30 Amp contacts
Terminations	Screw terminals for up to #8 AWG wire
Mechanical	ABS plastic housing with gasket seal; Multiple knockout holes for optional mounting to aluminum boxes
Light Actuation Levels (Factory Calibrated)	Energized: 35fc and below De-energized: above 60fc



## Mechanical



Note: All dimensions in inches.