

L-894 Base Plate



AP1935

Compliances

Certified to FAA AC 150/5345-42 (Current Edition); Size: B=12", D=16"



Application

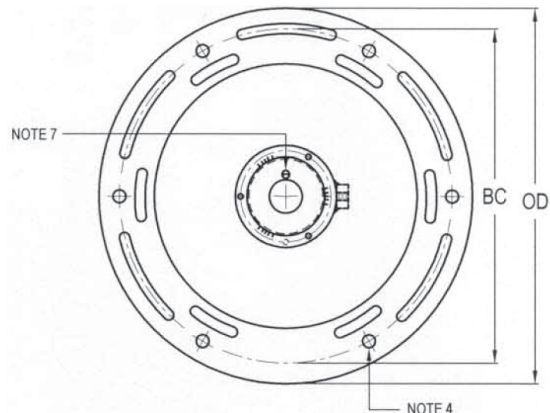
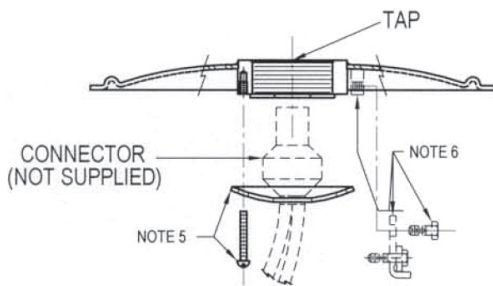
Mounts on an L-867 Size B, D or E light base to allow the installation of an elevated light

Key Features

- Constructed of Corten A588 steel with aviation yellow powder coat finish
- Sturdy installation ensured with (6) 7/16" dia equally spaced, thru holes
- Base plate shipped with:
 - Neoprene gasket:
 - AP1932/1935 12" (10530297)
 - AP2932/2935 16" (10530281)

Foam gasket:

- AP1932AK/AP1935AK 12" (10532042)
- Hardware packup #6120 which contains:
 - (1) 3 hole cable clamp (8089)
 - (3) #10-24 x 1 1/2" SS machine screws (10670781)
- Optional: Ground clamp hardware (AW0919) bulk packed for field installation
- (1) 1/4" dia weep hole standard: Add "AK" suffix to P/N for base plate w/o weep hole (Alaskan application)





Specifications

| Type | OD | BC | TAP |
|------------------------|----------------|-------------------|----------------------|
| AP1932_ _ 12" L867B | 12" [304.8] | 10.25" [260.4] | 2" NPS [50.8] |
| AP1935_ _ 12" L867B | 12" [304.8] | 10.25" [260.4] | 1 ½"-12 NF [28.1] |
| AP2932_ _ 16" L867D | 16" [406.4] | 14.25" [362] | 2" NPS [50.8] |
| AP2935_ _ 16" L867D | 16" [406.4] | 14.25" [362] | 1 ½"-12 NF [38.1] |

[] = dimensions in metrics; mm