

# Primary Wind Cone, Non-Frangible



Hali-Brite® L807 Size 2 shown with Hali-Brite® Segmented Circle

## Compliances

FAA: AC 150/5345-27F L807, L807(L)

ICAO: Annex 14, Volume 1, para. 5.1.1 (Size 2)



## Application

Windcone/ Wind Direction Indicator provides visual indication of wind direction and velocity for pilots

## Key Features

- Primary Wind Cone for all Airport, Heliport and Vertiports
- Certified to FAA AC 150/5345-27F by ETL
- ICAO Compliant to Annex 14, Vol. 1, para. 5.1.1 (Size 2)
- Available in FAA Size1 (18"x8' sock) or FAA Size2 (36"x12' Sock)
- Designed to operate at any ambient temperature between -67°F (-55°C) and 131°F (+55°C)
- Designed to withstand winds up to 75 knots (140 km/hr or 86 mph).
- Windsock moves freely about the vertical shaft it is attached to when subjected to wind of 3 knots (5.6 km/hr or 3.5 mph) or more and indicates the true wind direction within  $\pm 5$  degrees.
- Windsock extends fully when subjected to wind of 15 knots (28.7 km/hr or 17.8 mph)
- Anchor cage for concrete footing included
- Pre-assembled bearings and basket for easy installation
- Easy to operate winch for lowering basket
- 50,000 to 100,000 hour LED lamp life
- 4 year warranty on LED Lamps
- 80-90% less power consumption than halogen lamps
- NVG visibility
- Solar power option available-eliminate long underground wire and conduit installations!
- Marine Treated Option (recommended for installations within 100miles of saltwater) available for increased useful life in corrosive environments
- Wind Sock included, (berry compliant ) treated for rot, mildew, and water repellent

# Specifications

## General Catalog Numbers

L-807-□□-□□-□□□

**S1** = FAA Size 1  
(18" basket throat,  
8' long sock)

**S2** = FAA Size 2  
(36" basket throat,  
12' long sock)

**IN** = Internally Lighted  
(FAA Style I-B)

**EX** = Externally Lighted  
(FAA Style I-A)

**UN** = Unlighted

**120** = 120 Volt, LED,  
(Size1 14-19watts)  
(Size2 21-32watts)

**66A** = 6.6amp, LED,  
(Size1 52-65watts)  
(Size2 52-88watts)

**12V** = 12 Volt, LED,  
(Size1 6watts)  
(Size2 10Watts)

**230** = 230/240V 50/60hz  
(Size1 14-21watts)  
(Size2 21-36Watts)

**NON** = Unlighted

*\*All models Certified to FAA AC 150/5345-27F by ETL*

## Options

### L807 Marine Treat

"Marine Treated" for corrosive environments, within 100mi of saltwater. Includes: marine treated powder coat, stainless steel bearings, hardware, winch and anchor cage

### SPS-100-2

Solar Power Supply for size 1 12v windcone models

### SPS-200-2

Solar Power Supply for size 2 12v windcone models

### 7400-0000-1

FAA Size 1, Windssock, 18" throat by 8' long, berry compliant

### 7400-0002

FAA Size 2, Windssock, 36" throat by 12' long, berry compliant

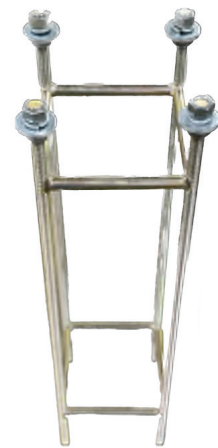
*\*One windssock included in every L807 order*



**Optional Solar Power Supply**



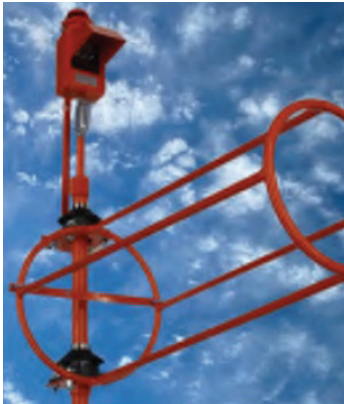
**Size 1 Windssock, included**



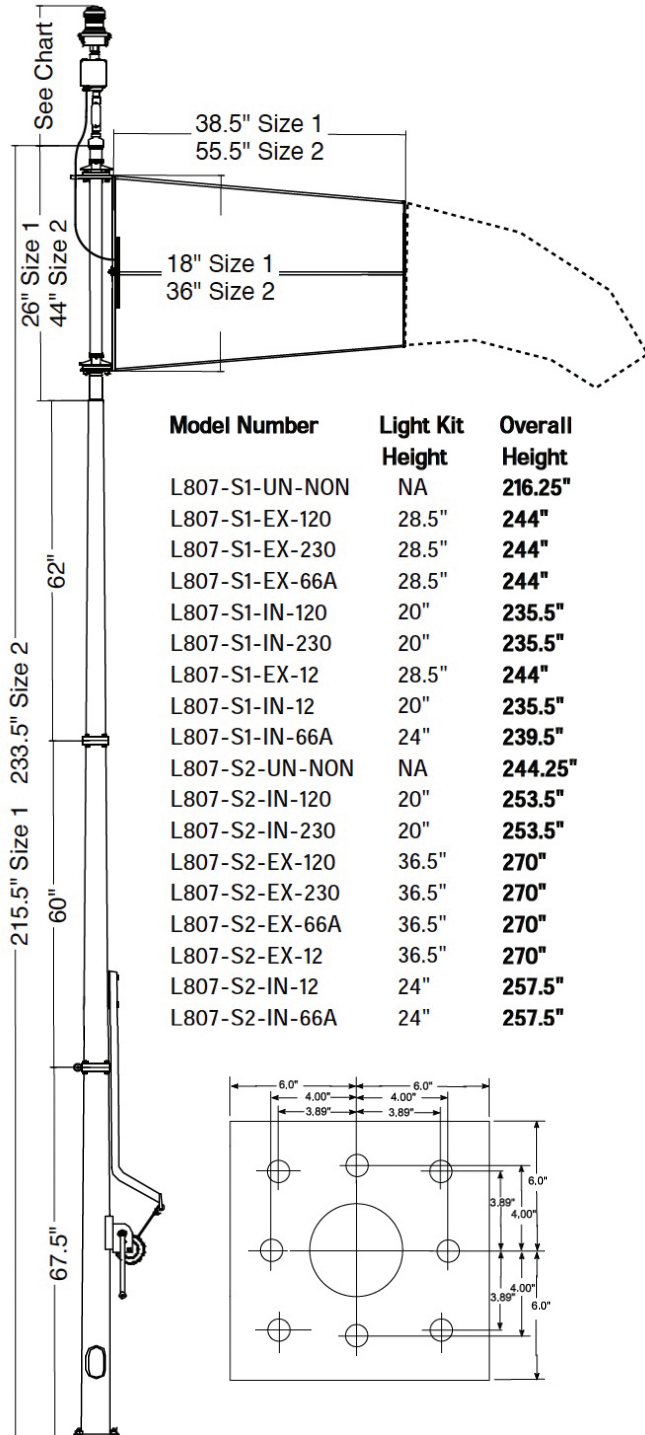
**Anchor Cage, Included**

# Specifications

**External LED**



**Internal LED**



## Warranty Information

- 4 Year Warranty on LED Lamps
- 2 Year Warranty on components
- See Manual for details

## Shipping Information

- Unpackaged Weight:** 212 lbs
- Palletized Volume:** 72" x 48" x 42"
- Palletized Weight:** 350lbs (Fully Crated option 500lbs)