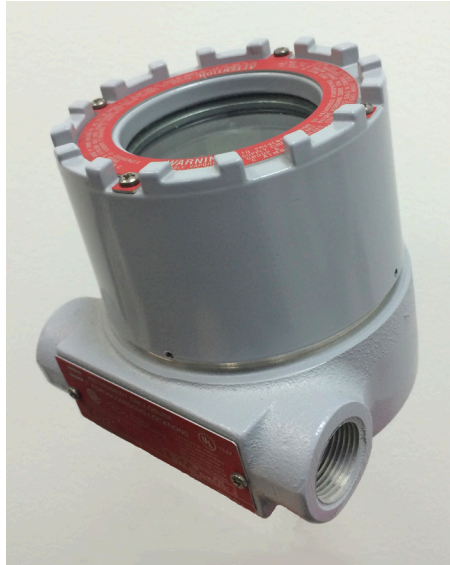


# PEC Photoelectric Controller Assembly



Weather Tight



Class 1, Division 2  
Group B\*, C, D

\*For Group B Applications seal within 1½" of enclosure in accordance with Section 501-5 of the National Electrical Code® as well as any other applicable code.

## General

This photocontrol is designed for tower and obstruction lighting applications. It is available in a weather tight package consisting of cast aluminum housing and cover/gasket assembly with lens, or in a Class 1, Div 2 enclosure. It is calibrated to switch ON at dusk and OFF at dawn at light levels per FAA specifications; for both red or dual systems. It offers a relay contact switching the input voltage.

There is a power up test mode, during which the switching delay is shortened. Once the power up test mode has timed out; the switching delay is automatically extended to its normal amount. This allows easy/quick testing of a new installation, and then for extended time delay in normal operation to avoid nuisance tripping from stray light sources and shading.

## General Catalog Numbers

18004-□□-□-S-□□□

AC = 95 - 265 VAC  
DC = 10 - 60 VDC

R = Red systems, 35 f·c and 60 f·c  
D = White or Dual systems, 2 f·c and 5 f·c

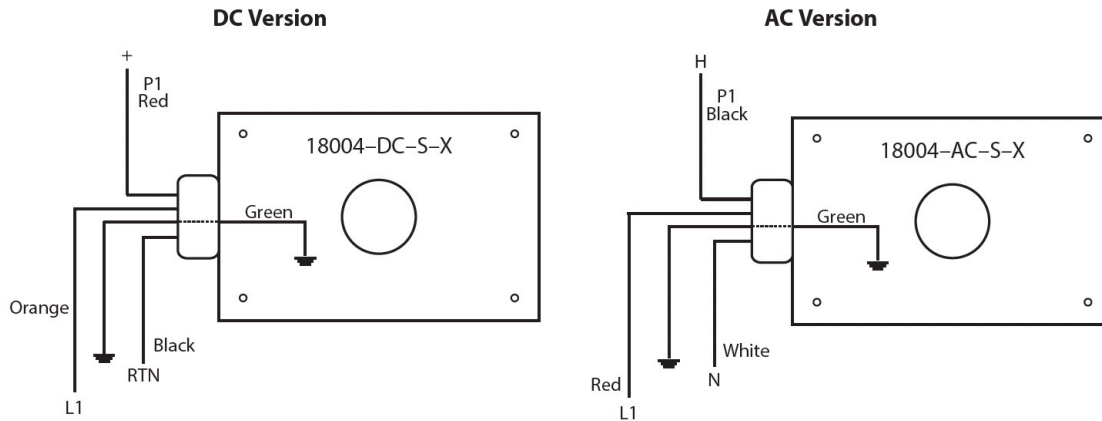
REP = Electronics only, for field replacement  
N4 = Photocontrol in weather tight enclosure  
X4 = Photocontrol in Class 1, Div 2 enclosure



# Specifications

<b>AC Input:</b>	95-277 VAC; 50/60 Hz
<b>DC Input:</b>	10-60 VDC
<b>Contact Rating:</b>	Relay: (Non-isolated SPST): 10 Amps @ 250v
<b>Electronic Temp Range:</b>	Storage: -55°C to +60°C Operating: -40°C to +55°C
<b>Switching Delay During Test Mode:</b>	5 Seconds
<b>Switching Delay After Test Mode:</b>	30 Seconds
<b>Test Mode:</b>	Automatically Terminates 10 minutes after application of power
<b>Wire Size:</b>	AWG 14

## Photocell Operation



## Dimensions for -N4 Part Numbers

Enclosure: Weather tight

