

# AGM

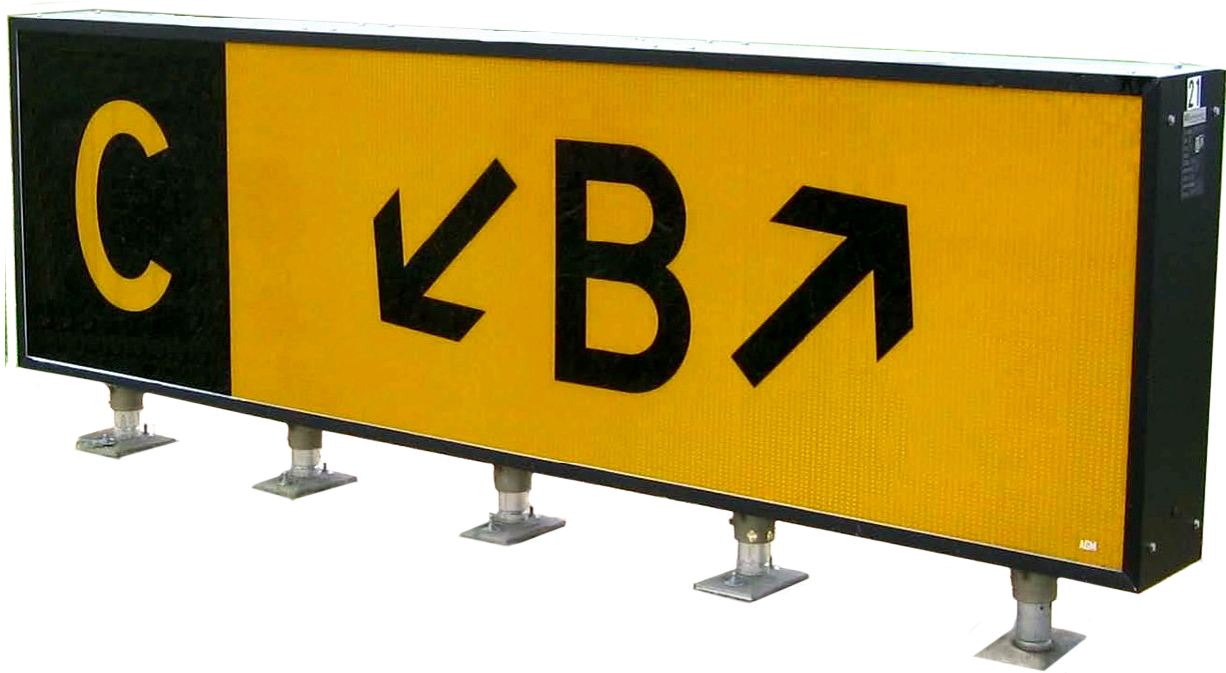
Airfield Guidance  
Manufacturers, Inc.



Inventors  
of L858 LED Signs

# OWNER'S MANUAL

## ICAO 800mm LEDV3 LED Strip



# Test Verification of Conformity

Verification Number: 105455047CRT-001TVOC

On the basis of the tests undertaken, the sample(s) of the below product have been found to comply with the requirements of the referenced specification(s)/standard(s) at the time the tests were carried out. This verification is part of the full test report(s) and should be read in conjunction with it (them).

Applicant Name & Address:	AGM Airfield Guidance Sign Mfrs Inc 108 Fairgrounds Dr Ste 8 Manlius, NY 13104-2450 USA
Product Description:	800mm, Code 3 or 4 Mandatory, Direction, Location sign.
Ratings & Characteristics:	face height 800mm, legend height 400mm, LED, operating range 2.8A – 6.6A Operations are conducted in runway visual range conditions less than a value of 800m, non-retroreflective.
Models/Type References:	I800JX.XSFX
Specification(s)/Standards:	International Civil Aviation Organization (ICAO), Aerodromes, Annex 14, Volume 1, Ninth Edition, dated July 2022. ICAO Photometry - Appendix 4, Sections 4-8 Chromaticity – Appendix 1, Figure A1-4 (night-time only) Frangibility – Section 5.4.1.3 Physical Characteristics – Appendix 4
Verification Issuing Office Name & Address:	Intertek Testing Services NA, Inc. 3933 US Rt 11 Cortland, NY 13045 USA
Test Report Number(s):	105455047CRT-001 (Oct 2023), 104115555CRT-001 (Jan 2019)

Additional information in Appendix.

Signature: 

**Name: Christopher W Metcalf**  
**Position: Engineering Supervisor**  
**Date: 11 October 2023**

This Verification is for the exclusive use of Intertek's client and is provided pursuant to the agreement between Intertek and its Client. Intertek's responsibility and liability are limited to the terms and conditions of the agreement. Intertek assumes no liability to any party, other than to the Client in accordance with the agreement, for any loss, expense or damage occasioned by the use of this Verification. Only the Client is authorized to permit copying or distribution of this Verification. Any use of the Intertek name or one of its marks for the sale or advertisement of the tested material, product or service must first be approved in writing by Intertek. The observations and test/inspection results referenced in this Verification are relevant only to the sample tested/inspected. This Verification by itself does not imply that the material, product, or service is or has ever been under an Intertek certification program.

## Table of Contents

Section	Page
TVOC .....	2
1: Catalog Numbers .....	5
2: General Information .....	5
3: Warranty .....	6
4: Handling .....	7
5. Storage .....	7
6: Installation .....	8
7: Maintenance .....	9
8: Cabinet Access .....	9
9: LEDV3 LED Strip Operation, Troubleshooting & Strip Replacement .....	10
10: Parts List .....	12
11: Dimensions and Electrical Characteristics .....	13

# How to Get Help

**PHONE:****MAIN:**

315-682-6707

**SUPPORT:**

866-212-1060

**SALES:**

315-744-3239

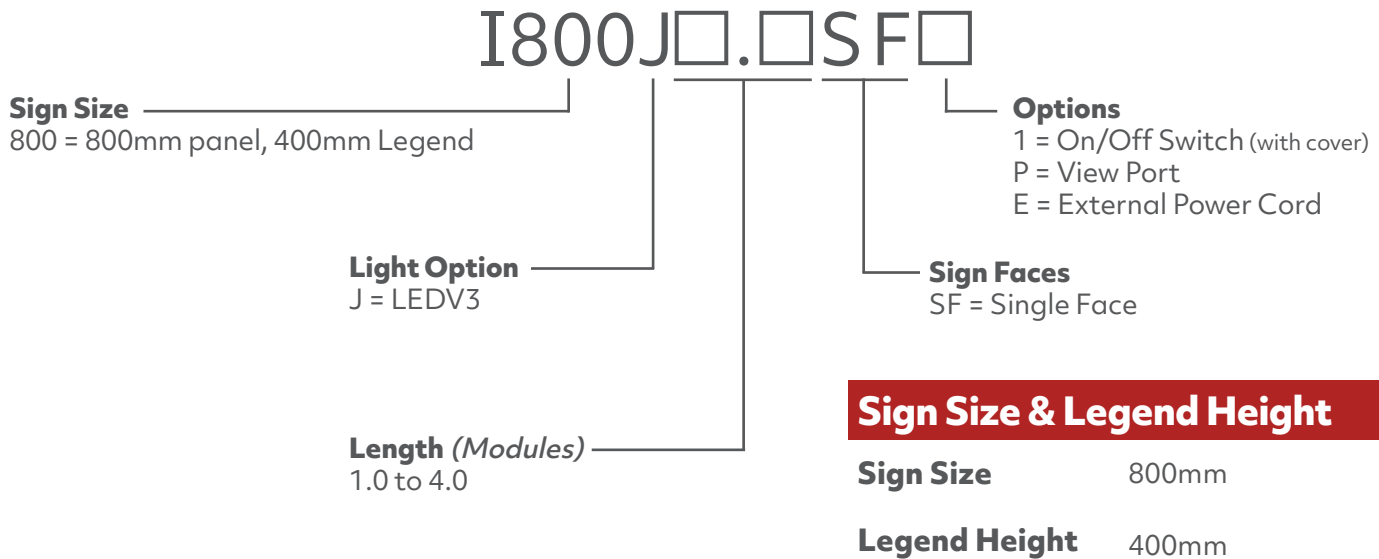
**EMAIL:**

sales@agmsigns.com or  
support@agmsigns.com

**WEB:**

www.agmsigns.com

## 1. Catalog Numbers



## 2. General Information

All AGM signs have been tested at the factory and set to function within ICAO Annex 14, Annex 14, Volume 1, Ninth Edition.

Installation and operation issues most frequently trace back to an undersized isolation transformer or to damage during shipping. Before commencing repairs, please contact AGM (866.212.1060 or support@agmsigns.com) with the catalog number and serial number from the name plate of the malfunctioning sign to determine warranty coverage.

If following the troubleshooting guidelines below does not resolve the operational issues, we are pleased to assist you via telephone or email. We keep parts in stock, and usually ship within 24 hours.

Consider upgrading your unlighted signs to energy efficient LED signs. AGM has retrofit kits for just that purpose – no need to purchase a whole new sign. Please contact AGM to learn more about the possibilities.

## 3. Warranty

AGM I-Lux Airfield Guidance Signs are warranted against mechanical and physical defects in design or manufacture for a period of 2 years from date of installation. AGM will correct such by repair or replacement, at its option, provided the signs have been properly handled and stored prior to installation, properly installed and operated after installation, and provided further that the buyer has notified AGM in writing within the warranty period and a reasonable time after notice of such defects. Refer to handling, storage, installation, and operational instructions for proper procedural guidance that must be followed to maintain warranty provisions.

This warranty is in effect for the specified term as long as the equipment has not been, in AGM's judgment: altered in such a way as to affect the equipment adversely; subjected to accident, negligence, and/or improper storage; and has been operated and maintained in accordance with AGM's published operational guidelines.

AGM reserves the right to examine signs on which a claim has been made. Equipment must be presented in the same condition as when the defect was discovered. AGM also reserves the right to require the return of equipment to establish any claim.

### Disclaimer

AGM's obligation under this warranty is limited to repair or replacement of defective equipment sold by AGM. This does not include any other costs such as the cost of removal, shipping, or installation of the defective part or repaired product, including labor or any consequential damages of any kind. AGM shall not be liable for any indirect or consequential damages.

Under no circumstances will AGM's liability exceed its sales price of the signs claimed to be defective. All transportation costs under this warranty are the responsibility of the buyer. Replacement parts and/or equipment provided under this warranty are covered under the same terms until the expiration of the original warranty period that began upon the first installation of the equipment.

This is AGM's sole and exclusive warranty with respect to the equipment sold to the buyer. There are no express or implied warranties of fitness for any particular purpose or any implied warranties other than those made expressly herein.

AGM shall not be liable to the buyer of this product or third parties for indirect or consequential damages, or for damages arising from the use of any options or parts other than those designated by AGM as approved products. Damage caused by lightning, flood and other natural or man-made causes are outside the scope of this warranty.

## 4. Handling

AGM I-Lux signs are shipped in a corrugated wrapping to protect against abrasion during shipping. The packaged signs are meant to be hand carried (sling straps are effective) or placed on dolly carts. The packaged sign is NOT designed to be handled by forklifts.

Make sure to note any damage that occurred during shipping when receiving the signs and be sure to document it with the carrier. When installing the sign make sure that the correct isolation transformer is connected.

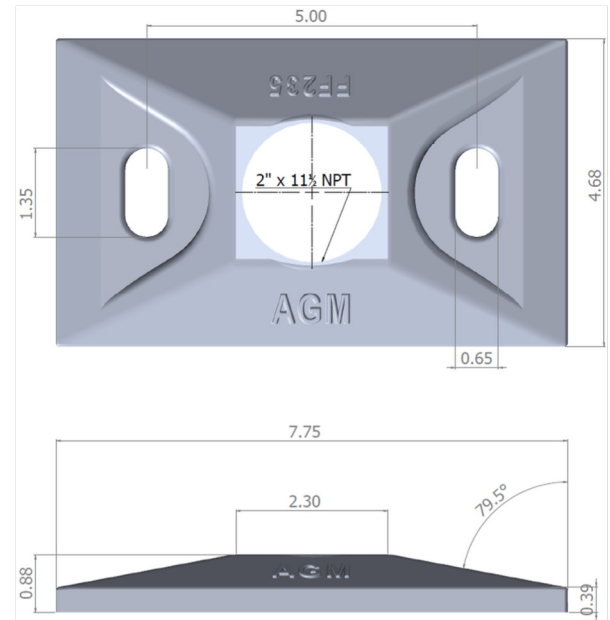
## 5. Storage

If the signs are to be stored before installation, keep them in the original corrugated wrapping for protection and store them upright in a dry location. If the corrugated wrapping becomes wet, it should be removed and recycled because it can cause damage as a result of aggravated humidity. If the corrugated wrapping is removed, keep the protective plastic on the legend panels until installation. This provides the last layer of protection in the absence of the corrugated wrapping. Damage resulting from improper storage is not covered by warranty.

## 6. Installation

Some steps not applicable for installation of signs furnished with external power cords

1. Place sign on the pad with long dimension of the floor flanges perpendicular to the length of the sign.
2. Mark anchor bolt locations.
3. Move the sign out of the way.
4. Drill mounting holes for anchor bolts.
5. Install isolation transformer into the base can.
  - Check technical data sheet to make sure correct wattage is used.
6. Secure cable clamp to transformer secondary lead or secondary extension cord.
7. Reposition the sign on the pad and hold at an angle.
8. Pull power cord out of sign leg and plug it into the transformer secondary lead or extension cord.
9. Rotate the sign to the upright position over the anchor holes being careful to not pinch the power cord.
10. Insert the anchor bolts and loosely clamp the floor flanges to the pad.
11. Loosen the pinch bolts in the slip flanges.
12. Tighten the anchor bolts on the floor flanges.
13. Tighten the pinch bolts in the slip flanges against the couplings.
14. Remove the protective plastic on the panels, being careful not to create foreign object debris (FOD).
15. When work is done on the circuit, verify sign operation between dusk and dawn.



**Floor Flange Dimensions**

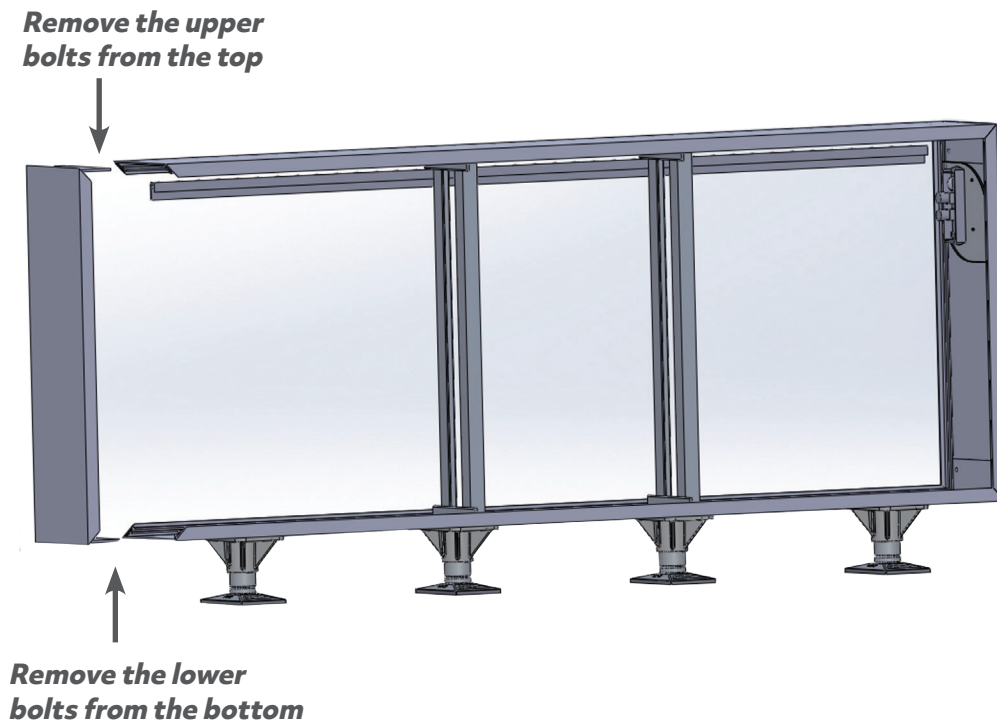


## 7. Maintenance

AGM signs are designed to provide years of trouble-free service. Prior to the performance of any work on the signs, power should be disconnected at the vault. We recommend an annual inspection and cleaning of the sign interior to maintain bright and even light output. Inspection of the signs should also include regular removal of any excess dirt, snow, and avian excrement from the sign exterior to maintain proper visibility of the sign legend.

## 8. Cabinet Access

- a. Remove the bolts from the top and bottom surface of the side opposite the power end.
- b. Slide the sign side cabinet extrusion out.
- c. Remove a legend panel by sliding it out the open end of the sign.



## 9a. LEDV3 LED Strip Operation

AGM's LEDV3 signs convert 6.6A to a low 24VDC using resilient legacy technology and provide beautifully even illumination using a single high efficiency LED strip.

**⚠ BEFORE PERFORMING MAINTENANCE ON AN AIRFIELD GUIDANCE SIGN, VERIFY THE SIGN'S CIRCUIT IS OFF AND LOCKED OUT FROM ACCIDENTAL ENERGIZATION.**

## 9b. LEDV3 LED Strip Troubleshooting

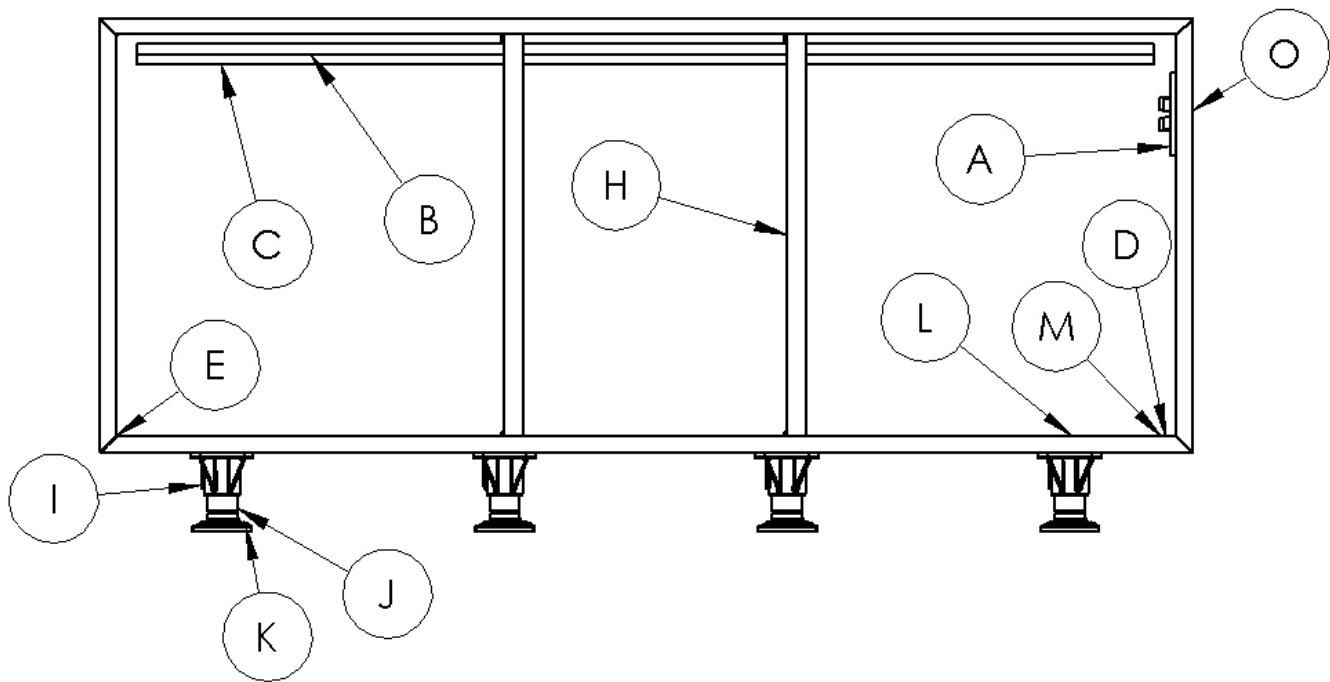
The lighting system is very simple. It is unlikely that the LED strip will fail completely at once. Over time, LEDs will fail and at the user's discretion the strip will need to be replaced.

1. If the LED strip is completely dark, check the C7-LV2-24 power supply for 2 green LEDs.
2. If there are 2 green LEDs, simply replace the LED strip.
3. If there are not 2 green LEDs, confirm with a True RMS meter that there is current on the power cord and that it matches the CCR output. If there is not, the isolation transformer may be the problem.
4. If there is appropriate current, de-energize the sign, disconnect the C7-LV2-24 from the diode bridge and, keeping the power off, test the outputs of the bridge with a meter. Using the Diode/Continuity function, put the black lead to the + and the red lead to the - on the bridge. A good reading is between 0.9VDC and 1.0VDC. If the reading is between 0.4VDC and 0.6VDC, replace the bridge.
5. If the bridge tests fine, replace the C7-LV2-24.

## 9c. LEDV3 LED Strip Replacement

1. De-energize power to the sign and open the cabinet per the instructions on page 8.
2. Remove the blank panel.
3. Remove the leads of the LEDV3 LED strip from C7-LV2-24.
4. Unbolt the LED channel from the support posts and remove from the sign cabinet.
5. Make note of the end of the extrusion that has the leads.
6. Pull on the leads of the LED strip to begin sliding the strip out of the extrusion.
7. Once some of the strip is exposed, pull on the strip instead of the leads.
8. Remove the LEDV3 LED strip from the extrusion.
9. Install the new LEDV3 LED strip by either sliding it into one end of the extrusion or pressing it down gently but firmly into the extrusion.
10. Bolt the channel back onto the support posts.
11. Energize the sign.
12. Replace the blank panel.
13. Bolt the cabinet back together.

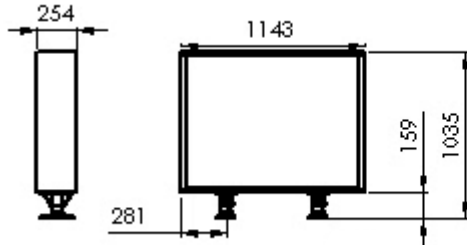
## 10. Parts List



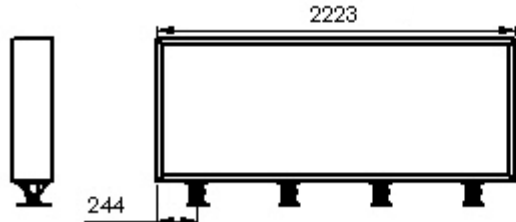
	Part #	Description
A	C7-LVCV2-24	Low Voltage Control V2, 24 VDC
B	I7-LEDV38x.x	LEDV3 LED Strip
C	I6-RLSC8x.x	LED Mounting Channel
D	C7-GDTH	Gas Discharge Tube Harness
E	I6-CB	Corner Bracket
F	I8-800LPxx	Legend Panel ( <i>not pictured</i> )
G	I8-800BPxx	Blank Panel ( <i>not pictured</i> )
H	I6-2SP	Support Post
I	C6-SF6	Slip Flange
J	I6-FC3	Frangible Coupling
K	C6-FF235	Floor Flange
L	C7-60PC	Power Cord ( <i>not pictured</i> )
M	C7-BRG	Bridge Rectifier ( <i>not pictured</i> )
O	I9-INP	Name Plate ( <i>not pictured</i> )

When ordering: X.X = sign cabinet length (from Cat #)

## 11. Dimensions & Electrical Characteristics



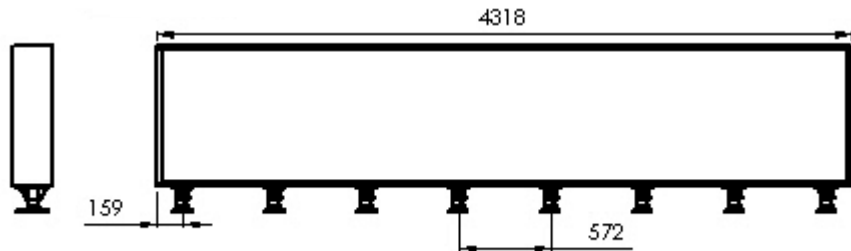
**1.0**  
49VA 0.92PF 150W xfmr



**2.0**  
72VA 0.93PF 150W xfmr



**3.0**  
93VA 0.90PF 300W xfmr



**4.0**  
111VA 0.90PF 500W xfmr